



SeaKing Towfish SK150 DST

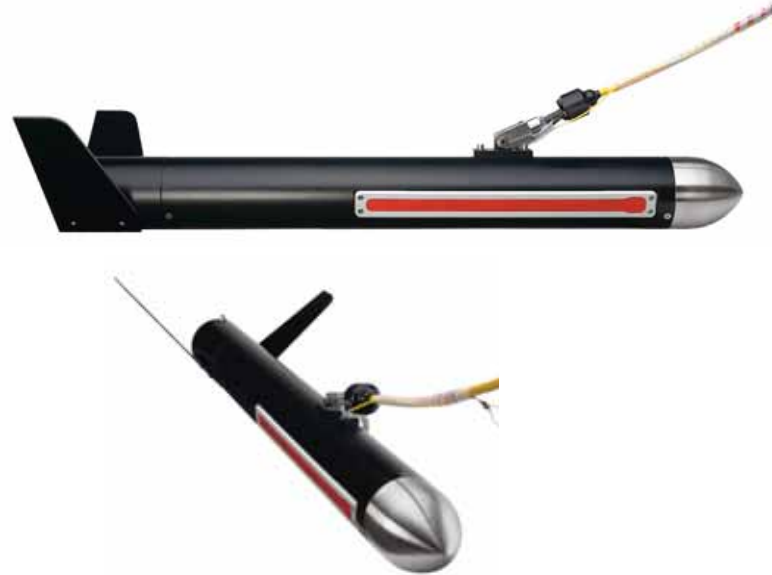
Sidescan Sonar

Features

- Wide range up to 300m
- Extremely cost effective
- Easy to deploy and recover
- Low power and high data rates
- Compatible with SeaKing product family

Applications

- Coastal surveys
- Military mine counter measures
- Shipwreck location
- Pipeline and route surveys
- River, harbour and canal surveys



Building on the success of our advanced side scan sonar systems Tritech announces the next generation model, the SeaKing Towfish SK150 DST. Specifically designed to fly at depths of up to 120 metres, the SK150 can be used for high resolution surveys at depths other lighter systems can't reach.

The SK150 combines the very latest Tritech DST (Digital Sonar Technology) electronics with industry leading transducer design and digital CHIRP signal processing techniques to dramatically improve range resolution and generate sonar images of unprecedented clarity.

The advanced 150kHz composite transducer assembly provides superior image quality and long range.

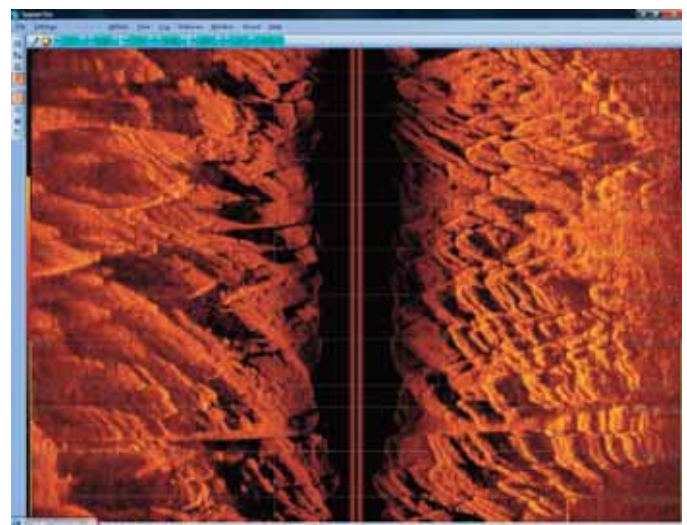
The SK150's simple, modular design provides increased reliability and facilitates quick in-field repairs should any damage occur during operation. All electronics are located in a single subsea pressure housing isolated from the rest of the towfish. The stabilising fins can be cheaply and easily replaced and a simple shear and recovery mechanism is provided in the event of the SK150 becoming snagged.

As part of the Tritech SeaKing suite of survey sensors, it is possible to run the SK150 with other SeaKing sensors over one communication link. The SeaKing Towfish SK150 DST may be connected to a Seanet SCU surface control or most standard laptops

and PC's with Tritech Seanet Pro software installed. In addition to the display of side scan sonar data, the system will take position input from GPS. This information is recorded along with the sonar data to allow a 'fix' of a target.

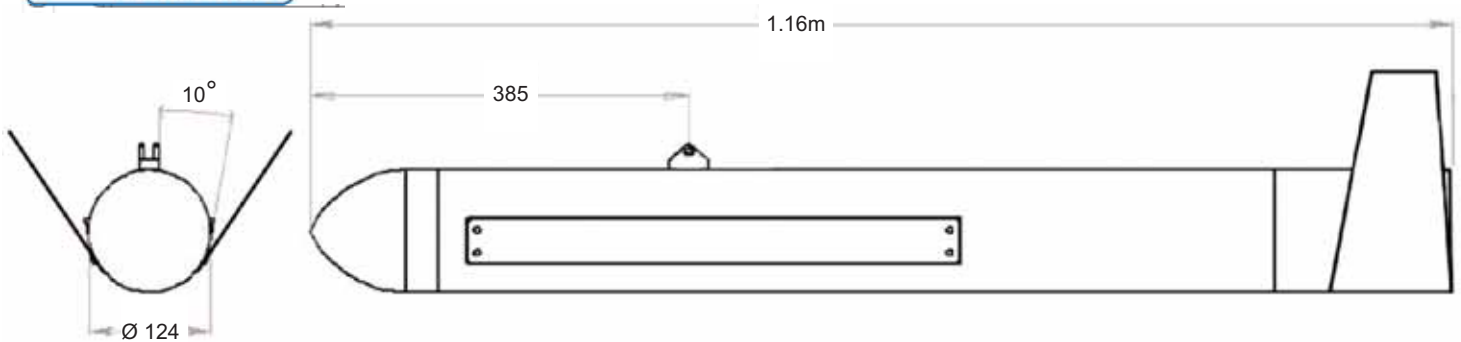
The post processing export facility will convert the logged data to XTF and CSV formats for third party software packages.

The SK150 is fully compatible with all Kilttec and Easyreeling electric winches.



Software screen image of the seabed rocks courtesy of Aquascan

Specifications



SeaKing 150 DST Sidescan Towfish Dimensions (N.B. Towpoint fixed at 385mm)

Operating frequency	150 kHz chirped
Beamwidth, vertical	60°
Beamwidth, horizontal	1.4°
Maximum range	350 meters
Minimum range	0.4 meters
Range resolution	5 - 300 mm depending on range
Source level	210 dB re 1uPA @ 1 m
Pulse length (typical)	400 microseconds
System bandwidth	40 kHz
Length	1160 mm
Diameter	124 mm
Tow Point	385 mm fixed from front
Mass	25.5 kg
Weight in Water	15.5 kg
Depth Rating (Maximum towing depth)	100 - 120 meters
Operating Tow Speed	0-5 knots
Power Requirements	36VDC @ 300mA
Power Range	36 VDC to 48 VDC
Standard materials	Polyester powder coated aluminium
Standard connector	Tritech 6 pin with water-block
Towfish cable type	Wire Armoured
Operating temperature	-10 °C to +35 °C
Storage temperature	-20 °C to +50 °C
Software	Tritech Seagnet display and control or low level direct command protocol
Data Log Format	Proprietary Tritech "V4Log" Exports to XTF, TIFF, GeoTIFF & Google Earth "kMZ" available via converter

All specifications are subject to change in line with Tritech's policy of continual product development.

Ref: EDS-SID-004.3