


Quick-Start Guide

Genesis Software for use with a
Tritech SeaHub

0716-SOM-00103-01

	Genesis Quick-Start Guide for use with a Tritech SeaHub	Document Ref: 0716-SOM-00103
		Revision : 1

The following is intended as a quick start guide for the connection and operation of a Tritech SeaHub under the Genesis software.

For wiring see the relevant section of the hardware manual for the individual product through our website www.moog.com/tritech

SeaHub Setup

Please note that the screen illustrations may differ slightly from that displayed on your computer.

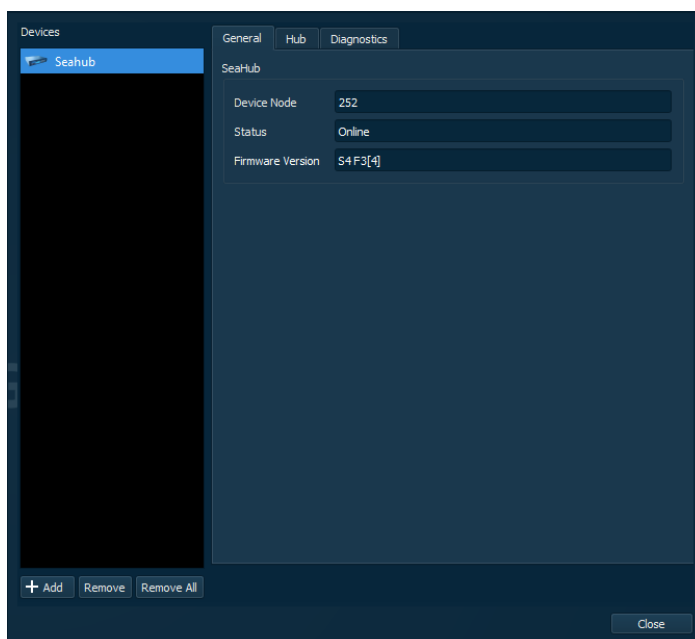
As you connect the devices they will be automatically detected and added to the program. The main area will display the default configuration and the status icons for the devices will appear in the top right of the menu bar area.



Clicking on the icon will bring up the settings and properties for the device with any error messages shown in the diagnostic tab of the device properties.

General

This displays general information when the SeaHub is connected.



Device Node

Displays the node of the Seahub

Status

Online when the SeaHub is connected

Offline when the SeaHub is disconnected

Firmware Version

Displays the firmware installed on the Seahub.

This persists if the SeaHub is removed.



Genesis Quick-Start Guide for use with a Trittech SeaHub

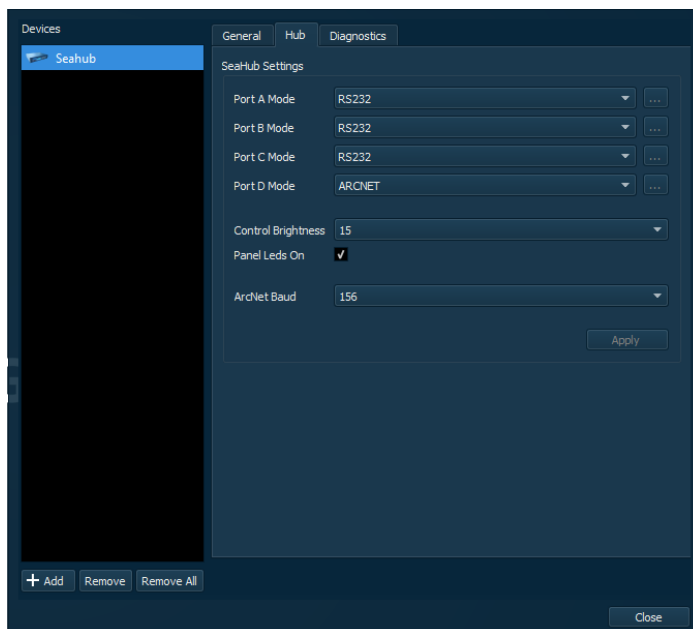
Document Ref:
0716-SOM-00103

Revision : 1

Hub

This is where the SeaHub settings are changed. If you are setting up a Trittech peripheral device, then you will need ensure that the port is setup correctly.

The SeaHub port baud rates are set in the configuration for attached sensor e.g. Sonar and not in the SeaHub settings.



Port A

Port Comms *RS232/RS485*

Port B

Port Comms *RS232/RS485/RS422*

Port C

Port Comms *RS232/RS485/Arcnet*

Port D

Port Comms *RS232/RS485/Arcnet*

Control Brightness

Adjust the brightness of the Seahub front LED's 1 through 15 increasing brightness

Panel Leds On

Switch the front panel LEDS *ON/OFF*

ArcNet Baud

Setting Arcnet baud rate across all ports
312 (*Deep Towfish*)
156 (*High*)
78 (*Low*)

After any setting change the *Apply* button must be pressed.



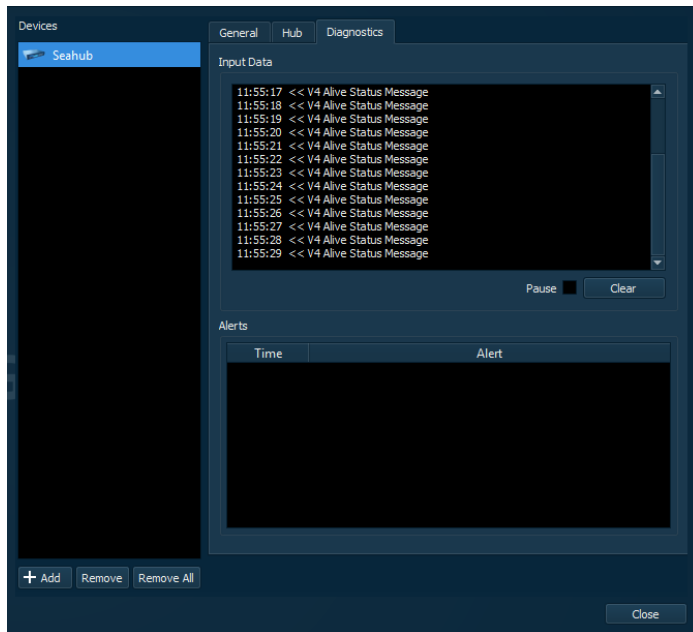
Genesis Quick-Start Guide for use with a Tritech SeaHub

Document Ref:
0716-SOM-00103

Revision : 1

Diagnostics

This displays the status messages from the main node of the SeaHub. This is useful during problem solving.



Input Data

Time stamped messages received on the Main SeaHub port

Alerts

Time stamped Alert messages generated by Genesis.

If the SeaHub is disconnected the *Diagnostics* tab will be updated with a warning symbol and the alert message detailed in the *Alert* window as below:

